


633nm~635nm 30mW~40mW SM Fiber Coupled Laser Diode with 4um SMF
633nm 30mW Coaxial Pigtailed LD with Single Mode Fiber (SM Fiber)

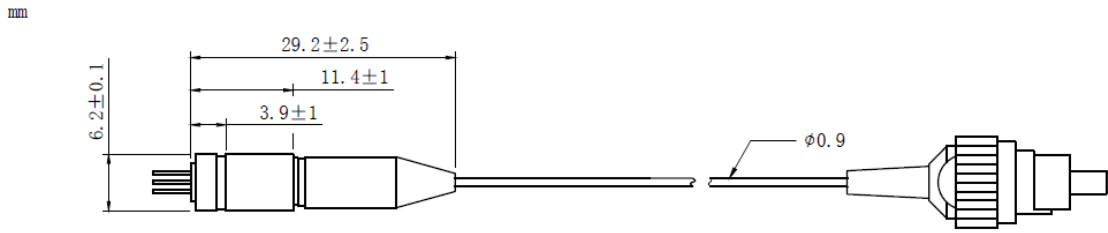
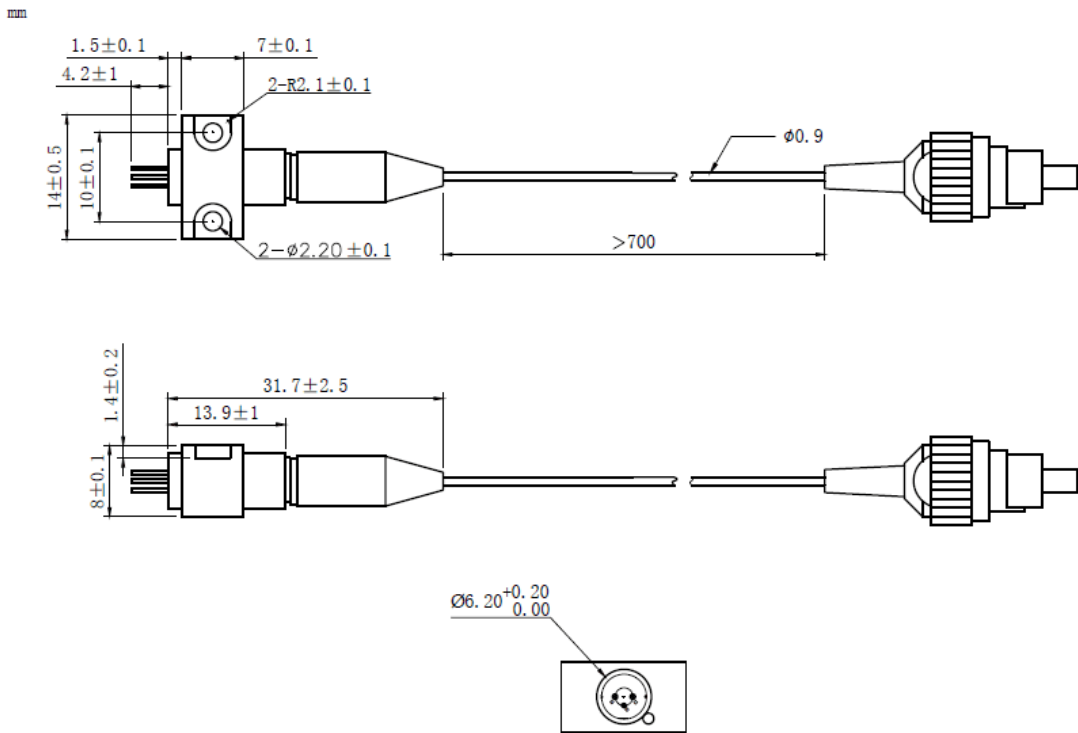
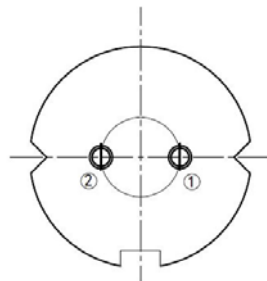
WSLP-633-030m-4

Wavespectrum Laser Group

www.wavespectrum-laser.com
en.wavespectrum-laser.com.cn

| 633nm Pigtailed Diode Laser | | 30mW/SM Fiber | |
|---|--|---------------|-------|
| PARAMETER | SYMBOL | VALUE | UNIT |
| Reverse Voltage | V_r | 2.0 | V |
| Operating Temperature | T_{op} | -10~+20 | °C |
| Storage Temperature | T_{stg} | -40~+85 | °C |
| Lead soldering temperature (10 sec.) | T_{is} | 260 | °C |
| Features: <ul style="list-style-type: none"> ● 633nm ● SM Fiber ● Coaxial or B82 Package |  | | |
| Applications: <ul style="list-style-type: none"> ● Medical Laser Treatment ● Aiming Beam ● Others | | | |
| Specifications | WSLP-633-030m-4 | | |
| | Min | Type | Max |
| Center Wavelength@18°C | 633nm±5nm | | |
| Recommended work Temperature | ≤18°C | | |
| Output Power | ---- | 30mW | ---- |
| Fiber Type | Single Mode Fiber | | |
| Fiber Core | 4um | | |
| Monitor Current | ---- | ---- | ---- |
| PD Reverse Voltage | ---- | ---- | ---- |
| Fiber Connector | FC/SC/SMA905 | | |
| Fiber Length | >80cm | | |
| Threshold Current | ---- | 55mA | 90mA |
| Operating Current | ---- | 180mA | 200mA |
| Operating Voltage | ---- | 2.7V | 3.3V |
| Package Style | Coaxial or B82 | | |



Coaxial Package View: (Part Number: WSLP-633-030m-4)

B82 Package View: (Part Number: WSLP-633-030m-4-B)

PIN Bottom View:


| | |
|---|-------|
| 1 | LD(+) |
| 2 | LD(-) |



Electrically shorten LD module and store in non-extreme conditions.
Suggest using the constant current power supply.

