

**1550nm 2mW FP Coaxial Pigtailed Laser Diode with 9um SMF**  
**1550nm SM Fiber Coupled LD with Single Mode Fiber (SM Fiber)**  
**WSLP-1550-002m-9-FP**

Wavespectrum Laser Group

[www.wavespectrum-laser.com](http://www.wavespectrum-laser.com)

PARAMETER	SYMBOL	VALUE	UNIT
LD Reverse Voltage	$V_r$	2.0	V
PD Reverse Voltage	$V_{r(PD)}$	15	V
Operating Temperature	$T_{op}$	-40 ~ +85	°C
Storage Temperature	$T_{stg}$	-40 ~ +100	°C
Lead soldering temperature (10 sec.)	$T_{is}$	260	°C

**Features:**

- 1550nm
- FP Laser Diode
- Built-in Photodiodes
- 9um SM Fiber
- Isolation Optional
- Coaxial/Receptacle package

**Applications:**

- Test Equipments
- Optical Transmitter of Analog Signal
- Optical Transmitter of Data Signal



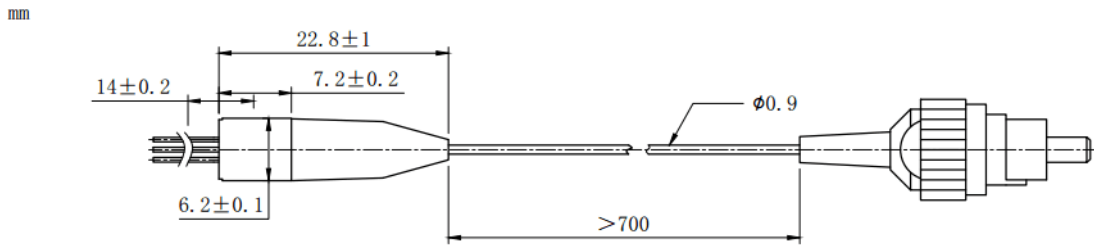
**Specifications**

**WSLP-1550-002m-9-FP**

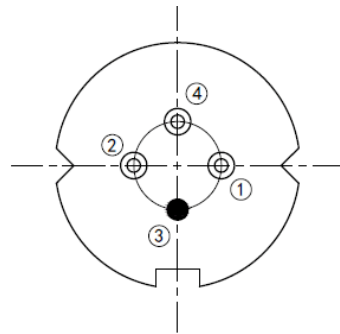
	Min	Type	Max
Center Wavelength@25°C	±5nm	1550nm	±10nm
Laser Type	FP		
Output Power	----	2mW	----
Fiber Core	9um SM Fiber		
Threshold Current (Typ.) $I_{th}$	----	5mA	15mA
Operating Current	----	30mA	35mA
Operating Voltage	----	1.3V	1.6V
Spectral Width(FWHM)	----	2nm	5nm
SMSR	----	35dB	----
Monitor Current	0.1mA	----	----
PD Capacitance	----	10pF	20pF
PD Dark Current	----	----	0.1uA
Package Style	Coaxial (Receptacle Optional)		
Recommended Operation Temperature	25°C		



### Coaxial Package View



### Pin Bottom View (A-Type)



PIN 1	PD (+)
PIN 2	LD (-)
PIN 3	LD (+), CASE
PIN 4	PD (-)

Electrically shorten LD module and store in non-extreme conditions.  
 Suggest using the constant current power supply.

