

**1550nm 10mW DFB Coaxial Pigtailed Laser Diode with 9um Single Mode Fiber**
**1550nm High Power SM Fiber Coupled LD with Single Mode Fiber (SM Fiber)**
**WSLP-1550-010m-9-DFB**
**Wavespectrum Laser Group**
**www.wavespectrum-laser.com**

PARAMETER	SYMBOL	VALUE	UNIT
LD Reverse Voltage	$V_r$	2.0	V
PD Reverse Voltage	$V_{r(PD)}$	15	V
Operating Temperature	$T_{op}$	-20 ~ +50	°C
Storage Temperature	$T_{stg}$	-40 ~ +100	°C
Lead soldering temperature (10 sec.)	$T_{is}$	260	°C

**Features:**

- 1550nm
- DFB Laser Diode
- Built-in Photodiodes
- 9um SM Fiber
- Isolation Optional
- Coaxial or B85 Package

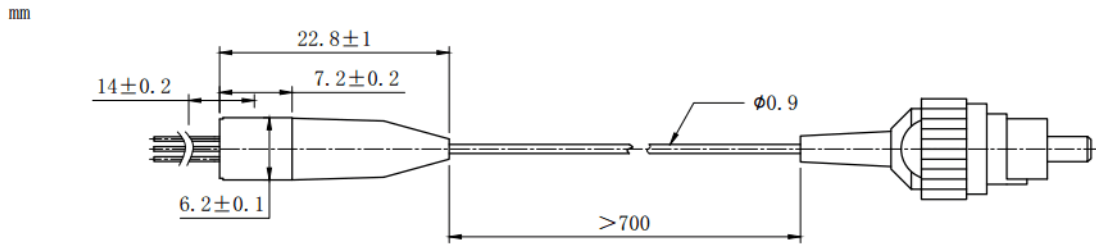
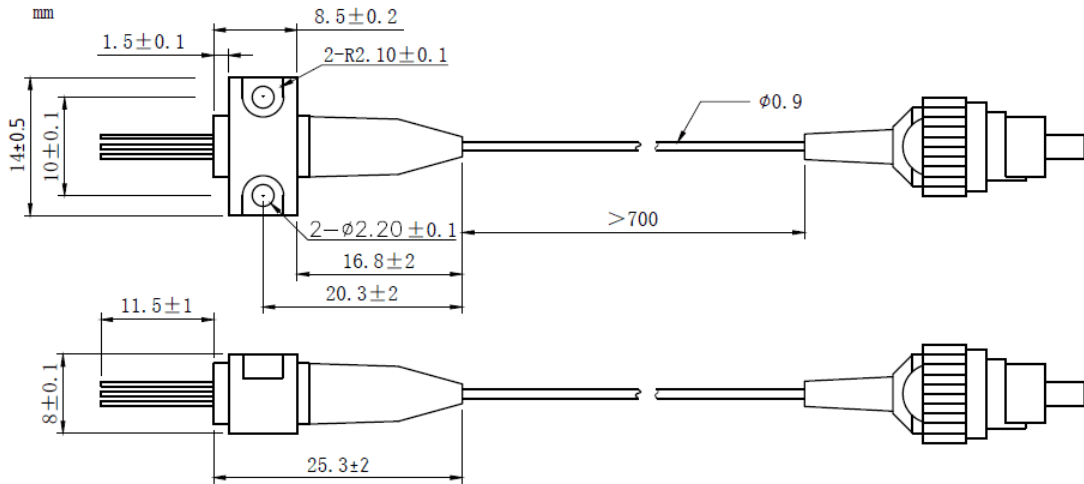
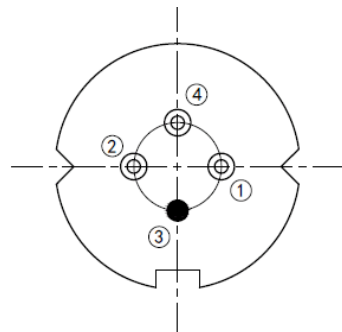
**Applications:**

- Test Equipments
- Optical Transmitter of Analog Signal
- Optical Transmitter of Data Signal


**Specifications**
**WSLP-1550-010m-9-DFB**

	Min	Type	Max
Center Wavelength@25°C	±3nm	1550nm	±10nm
Laser Type	DFB		
Output Power	----	10mW	----
Fiber Core	9um SM Fiber		
Threshold Current (Typ.) $I_{th}$	----	5mA	15mA
Operating Current	----	80mA	100mA
Operating Voltage	----	1.4V	1.7V
Spectral Width(FWHM)	----	----	3nm
SMSR	----	35dB	----
Monitor Current	0.1mA	----	----
PD Capacitance	----	10pF	20pF
PD Dark Current	----	----	0.1uA
Package Style	Coaxial or B85		
Recommended Operation Temperature	25°C		
Connector	FC/SC/SMA905		



**Coaxial Package View: (Part Number: WSLP-1550-010m-9-DFB)**

**B85 Package View: (Part Number: WSLP-1550-010m-9-B-DFB)**

**Pin Bottom View (A-Type)**


PIN 1	PD(+)
PIN 2	LD(-)
PIN 3	LD(+), CASE
PIN 4	PD(-)



Electrically shorten LD module and store in non-extreme conditions.  
Suggest using the constant current power supply.

