

1310nm 10mW DFB Coaxial Pigtailed Laser Diode with 9um Single Mode Fiber
1310nm SM Fiber Coupled LD with Single Mode Fiber (SM Fiber)
WSLP-1310-010m-9-DFB
Wavespectrum Laser Group
www.wavespectrum-laser.com

PARAMETER	SYMBOL	VALUE	UNIT
LD Reverse Voltage	V_r	2.0	V
PD Reverse Voltage	$V_{r(PD)}$	15	V
Operating Temperature	T_{op}	-20 ~ +50	°C
Storage Temperature	T_{stg}	-40 ~ +100	°C
Lead soldering temperature (10 sec.)	T_{is}	260	°C

Features:

- 1310nm
- DFB Laser Diode
- Built-in Photodiodes
- 9um SM Fiber
- Isolation Optional
- Coaxial or B85 package

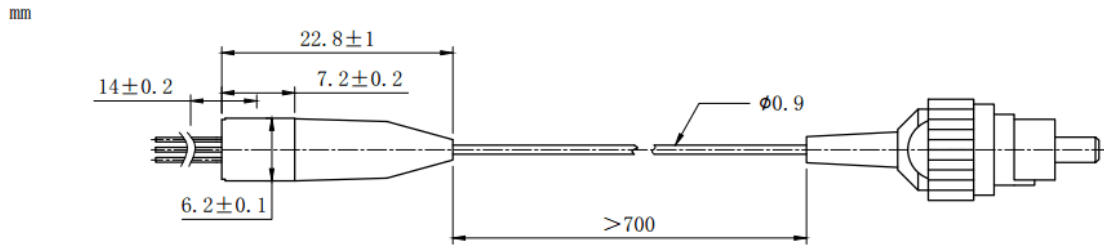
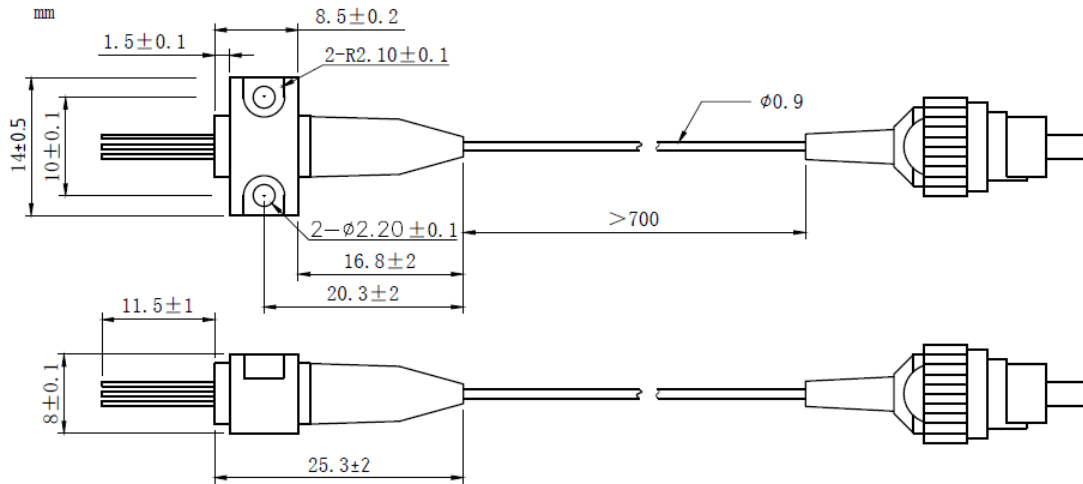
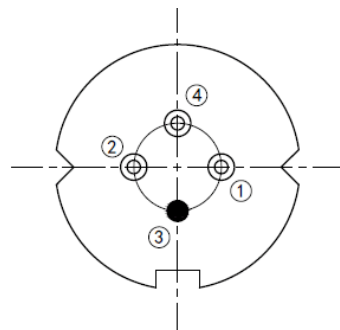
Applications:

- Test Equipments
- Optical Transmitter of Analog Signal
- Optical Transmitter of Data Signal


Specifications
WSLP-1310-010m-9-DFB

	Min	Type	Max
Center Wavelength@25°C	±3nm	1310nm	±10nm
Laser Type	DFB		
Output Power	----	10mW	----
Fiber Core	9um SM Fiber		
Threshold Current (Typ.) I_{th}	----	5mA	15mA
Operating Current	----	70mA	80mA
Operating Voltage	----	1.4V	1.7V
Spectral Width(FWHM)	----	----	3nm
SMSR	----	35dB	----
Monitor Current	0.1mA	----	----
PD Capacitance	----	10pF	20pF
PD Dark Current	----	----	0.1uA
Package Style	Coaxial or B85		
Recommended Operation Temperature	25°C		
Connector	FC/SC/SMA905		



Coaxial Package View: (Part Number: WSLP-1310-010m-9-DFB)

B85 Package View: (Part Number: WSLP-1310-010m-9-B-DFB)

Pin Bottom View (A-Type)


PIN 1	PD (+)
PIN 2	LD (-)
PIN 3	LD (+), CASE
PIN 4	PD (-)



Electrically shorten LD module and store in non-extreme conditions.
Suggest using the constant current power supply.

