
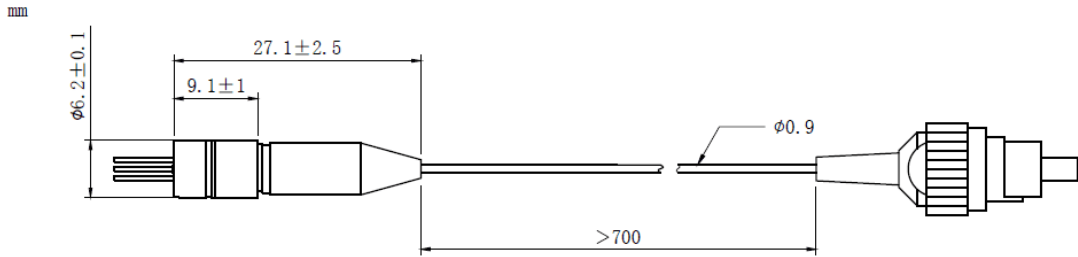
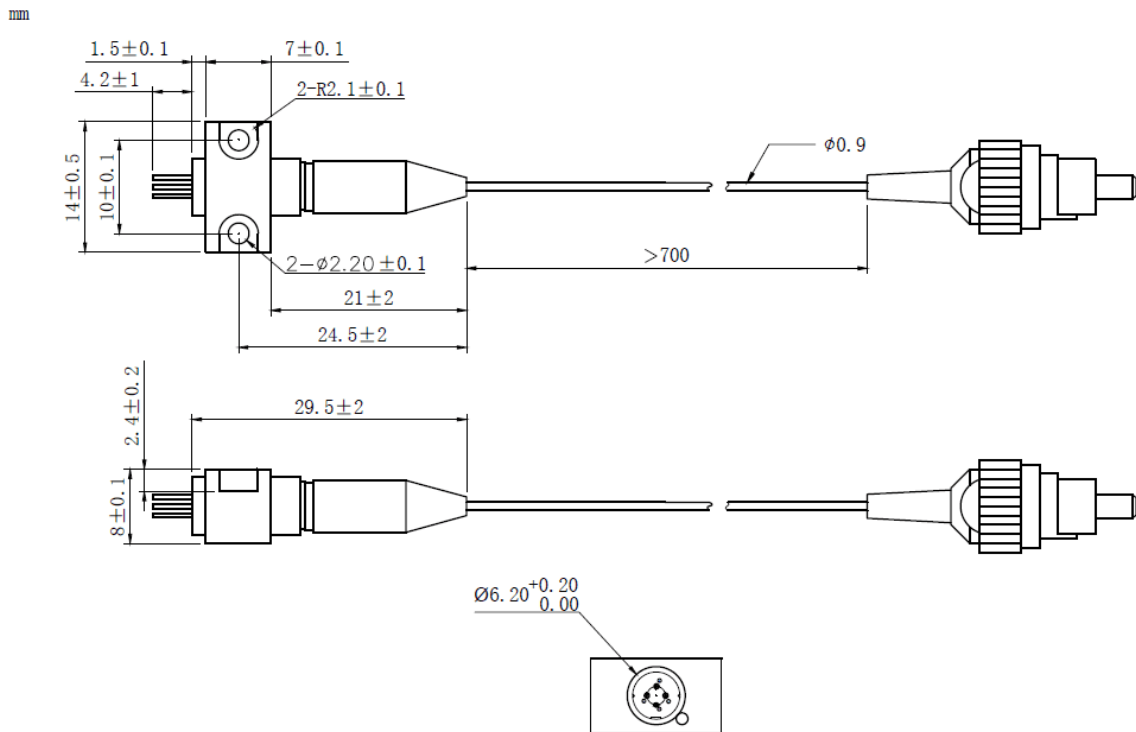
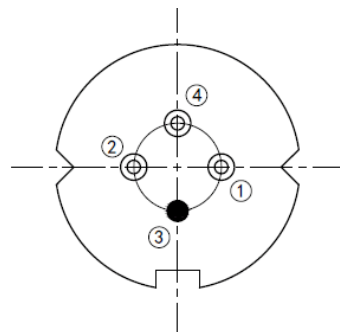


1310nm 10mW Pigtailed Laser Diode Module With Polarization Maintaining Fiber (PM Fiber)
1310nm PM Fiber Coupled LD Module with Coaxial Package (Single Mode Fiber)
WSLP-1310-010m-PM-DFB
Wavespectrum Laser Group
www.wavespectrum-laser.com

PARAMETER	SYMBOL	VALUE	UNIT	
LD Reverse Voltage	V_r	2.0	V	
PD Reverse Voltage	$V_{r(PD)}$	15	V	
Operating Temperature	T_{op}	-20 ~ +50	°C	
Storage Temperature	T_{stg}	-40 ~ +85	°C	
Lead soldering temperature (10 sec.)	T_{is}	260	°C	
Features: <ul style="list-style-type: none"> ● 1310nm ● DFB Laser Diode ● Built-in Photodiodes ● Polarization Maintaining Fiber ● High Reliability ● High Polarization Extinction Ratio 				
Applications: <ul style="list-style-type: none"> ● Test Equipments ● Optical Transmitter of Analog Signal ● Optical Transmitter of Data Signal 				
Specifications		WSLP-1310-010m-PM-DFB		
		Min	Type	Max
Center Wavelength@25°C		±3nm	1310nm	±10nm
Laser Type		DFB		
Output Power		----	10mW	----
Fiber Type		Polarization maintaining Fiber		
Fiber Core		9um		
Polarization Extinction Ratio		13dB	15dB	
Threshold Current (Typ.) I_{th}		----	5mA	15mA
Operating Current		----	70mA	80mA
Operating Voltage		----	1.4V	1.7V
Spectral Width(FWHM)		----	----	3nm
Recommended Operation Temperature		25°C		
Connector		FC/APC		
Fiber Length		>80cm		
Package Style		Coaxial or B86		
High Polarization Extinction Ratio (PER) Version Laser Module is also available, please contact us.				



Coaxial Package View: (Part Number: WSLP-1310-010m-PM-DFB)

B86 Package View: (Part Number: WSLP-1310-010m-PM-B-DFB)

Bottom View: (A-Type)


PIN 1	PD (+)
PIN 2	LD (-)
PIN 3	LD (+), CASE
PIN 4	PD (-)



Electrically shorten LD module and store in non-extreme conditions.
Suggest using the constant current power supply.

