
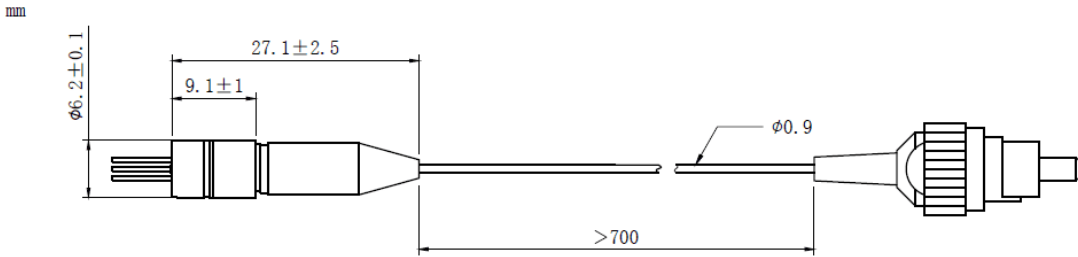
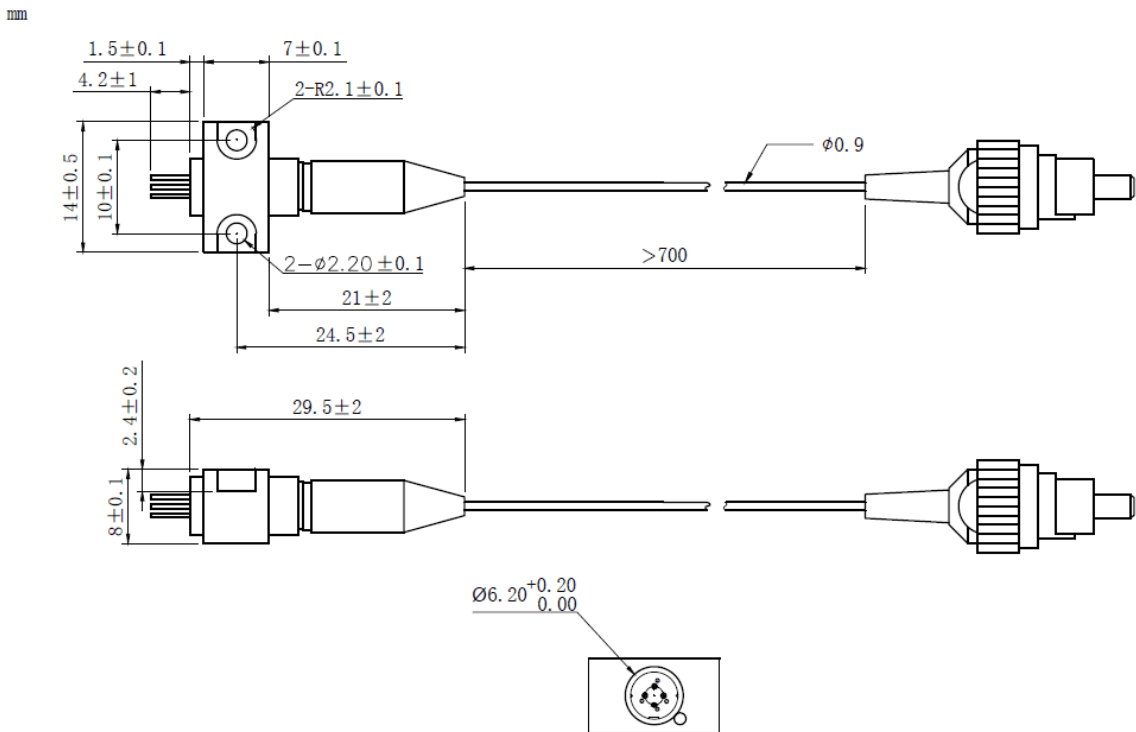
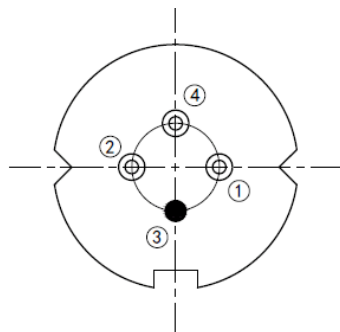


1310nm 15mW Pigtailed Laser Diode Module With Polarization Maintaining Fiber (PM Fiber)
1310nm 15mW High Power PM Fiber Coupled LD Module with Coaxial Package (Single Mode Fiber)
WSLP-1310-015m-PM-DFB
Wavespectrum Laser Group
www.wavespectrum-laser.com

PARAMETER	SYMBOL	VALUE	UNIT
LD Reverse Voltage	V_r	2.0	V
PD Reverse Voltage	$V_{r(PD)}$	15	V
Operating Temperature	T_{op}	-20 ~ +50	°C
Storage Temperature	T_{stg}	-40 ~ +85	°C
Lead soldering temperature (10 sec.)	T_{is}	260	°C
Features: <ul style="list-style-type: none"> ● 1310nm ● DFB Laser Diode ● Built-in Photodiodes ● Polarization Maintaining Fiber ● High Reliability ● High Polarization Extinction Ratio 			
Applications: <ul style="list-style-type: none"> ● Test Equipments ● Optical Transmitter of Analog Signal ● Optical Transmitter of Data Signal 			
Specifications		WSLP-1310-015m-PM-DFB	
		Min	Type
Center Wavelength@25°C		±3nm	1310nm
			Max
Center Wavelength@25°C			±10nm
Laser Type		DFB	
Output Power		----	15mW

Fiber Type		Polarization maintaining Fiber	
Fiber Core		9um	
Polarization Extinction Ratio		13dB	15dB
Threshold Current (Typ.) I_{th}		----	5mA
			15mA
Operating Current		----	80mA
			100mA
Operating Voltage		----	1.4V
			1.7V
Spectral Width(FWHM)		----	3nm
Recommended Operation Temperature		25°C	
Connector		FC/APC	
Fiber Length		>80cm	
Package Style		Coaxial or B86	
High Polarization Extinction Ratio (PER) Version Laser Module is also available, please contact us.			



Coaxial Package View: (Part Number: WSLP-1310-015m-PM-DFB)

B86 Package View: (Part Number: WSLP-1310-015m-PM-B-DFB)

Bottom View: (A-Type)


PIN 1	PD (+)
PIN 2	LD (-)
PIN 3	LD (+), CASE
PIN 4	PD (-)



Electrically shorten LD module and store in non-extreme conditions.
Suggest using the constant current power supply.

