


**635nm~638nm 50mW SM Fiber Coupled Laser Diode with 4um SMF**  
**635nm 50mW Coaxial Pigtailed LD with Single Mode Fiber (SM Fiber)**

WSLP-635-050m-4

Wavespectrum Laser Group

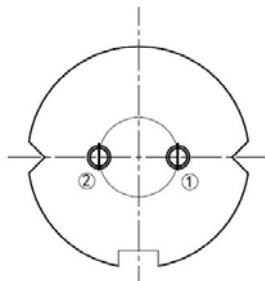
[www.wavespectrum-laser.com](http://www.wavespectrum-laser.com)
[en.wavespectrum-laser.com.cn](http://en.wavespectrum-laser.com.cn)

635nm Pigtailed Diode Laser		50mW/SM Fiber	
PARAMETER	SYMBOL	VALUE	UNIT
Reverse Voltage	$V_r$	2.0	V
Operating Temperature	$T_{op}$	-10~+60	°C
Storage Temperature	$T_{stg}$	-40~+85	°C
Lead soldering temperature (10 sec.)	$T_{is}$	260	°C
<b>Features:</b> <ul style="list-style-type: none"> <li>● 635nm</li> <li>● SM Fiber</li> <li>● Coaxial or B82 Package</li> </ul>			
<b>Applications:</b> <ul style="list-style-type: none"> <li>● Medical Laser Treatment</li> <li>● Aiming beam</li> <li>● Others</li> </ul>			
<b>Specifications</b>	<b>WSLP-635-050m-4</b>		
	Min	Type	Max
Center Wavelength@25°C	630nm	638nm	645nm
Recommended work Temperature	25°C		
Output Power	----	50mW	----
Fiber Type	Single Mode Fiber		
Fiber Core	4um		
Monitor Current	----	----	----
PD Reverse Voltage	----	----	----
Fiber Connector	FC/SC/SMA905		
Fiber Length	----	80cm	100cm
Threshold Current	----	60mA	90mA
Operating Current	----	200mA	220mA
Operating Voltage	----	2.7V	3.3V
Package Style	Coaxial or B82		



**Coaxial Package View: (Part Number: WSLP-635-050m-4)**

**B82 Package View: (Part Number: WSLP-635-050m-4-B)**

**PIN Bottom View:**


1	LD(+)
2	LD(-)



Electrically shorten LD module and store in non-extreme conditions.  
Suggest using the constant current power supply.

