


635nm~640nm 80mW~100mW Fiber Coupled Laser Diode with Reflection Coating | Reflect 1064nm light

638nm 80mW Coaxial Pigtailed Diode Laser with 9um Fiber | Red LD module for Aiming Beam

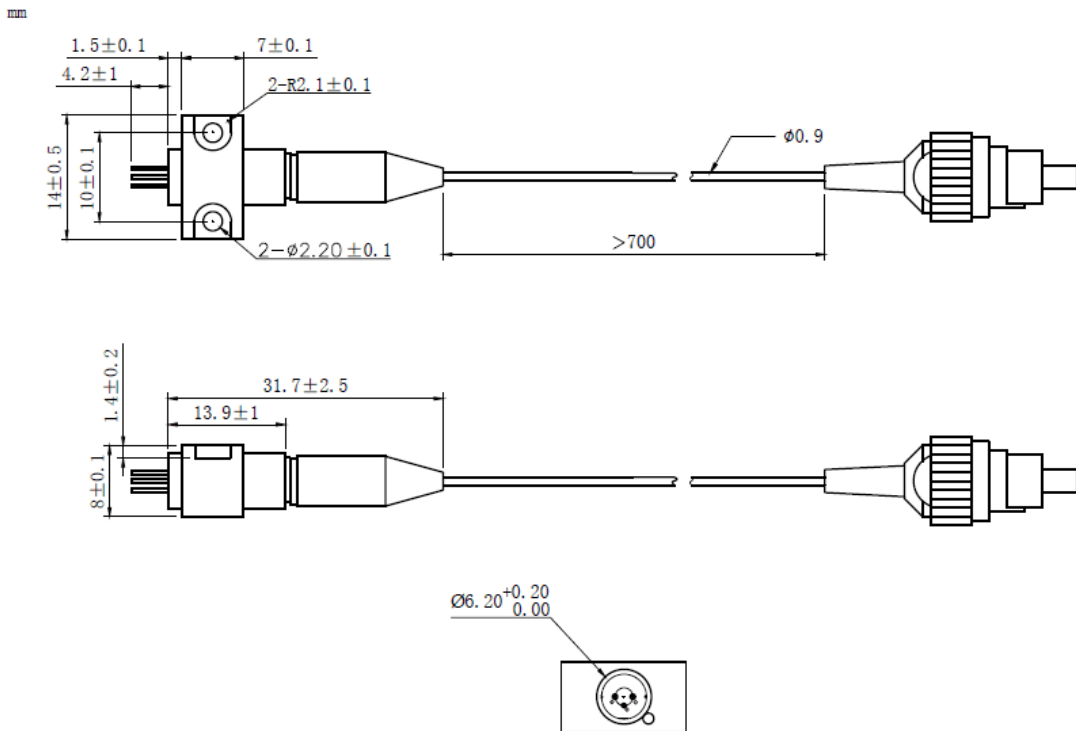
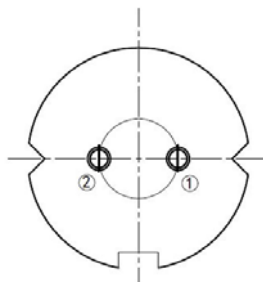
WSLP-635-080m-9-B-R

Wavespectrum Laser Group

www.wavespectrum-laser.com

635nm Pigtailed Diode Laser		80mW/9um Fiber		en.wavespectrum-laser.com.cn	
PARAMETER	SYMBOL	VALUE		UNIT	
Reverse Voltage	V_r	2.0		V	
Operating Temperature	T_{op}	-10~+60		°C	
Storage Temperature	T_{stg}	-40~+85		°C	
Lead soldering temperature (10 sec.)	T_{is}	260		°C	
Features: <ul style="list-style-type: none"> 635nm With 9um Fiber With Reflection coating B82 Package 					
Applications: <ul style="list-style-type: none"> Medical Laser Treatment Other 					
Specifications		WSLP-635-080m-9-B-R			
		Min	Type	Max	
Center Wavelength@25°C		630nm	638nm	645nm	
Spectral Width (FWHM)		----	2.0nm	----	
Output Power		----	80mW	----	
Fiber Type		SMF-28			
Fiber Core		9um			
Recommend Operating Temperature		25°C			
Fiber Connector		FC/SC/SMA905			
Fiber Length		----	80cm	100cm	
Threshold Current		----	65mA	95mA	
Operating Current		----	220mA	240mA	
Operating Voltage		----	2.8V	3.5V	
Package Style		B82			
Reflection ratio (1000nm~1100nm)		>99.9%			



B82 Package View:

PIN Bottom View:


1	LD(+)
2	LD(-)

Electrically shorten LD module and store in non-extreme conditions.
 Suggest using the constant current power supply.



Wavespectrum Laser Group
www.wavespectrum-laser.com
sales@wavespectrum-laser.com

