


635nm~640nm 100mW Fiber Coupled Laser Diode with Reflection Coating | Reflect 1064nm light

638nm 100mW High Power Coaxial Pigtailed Diode Laser with 9um Fiber | Red LD module for Aiming Beam

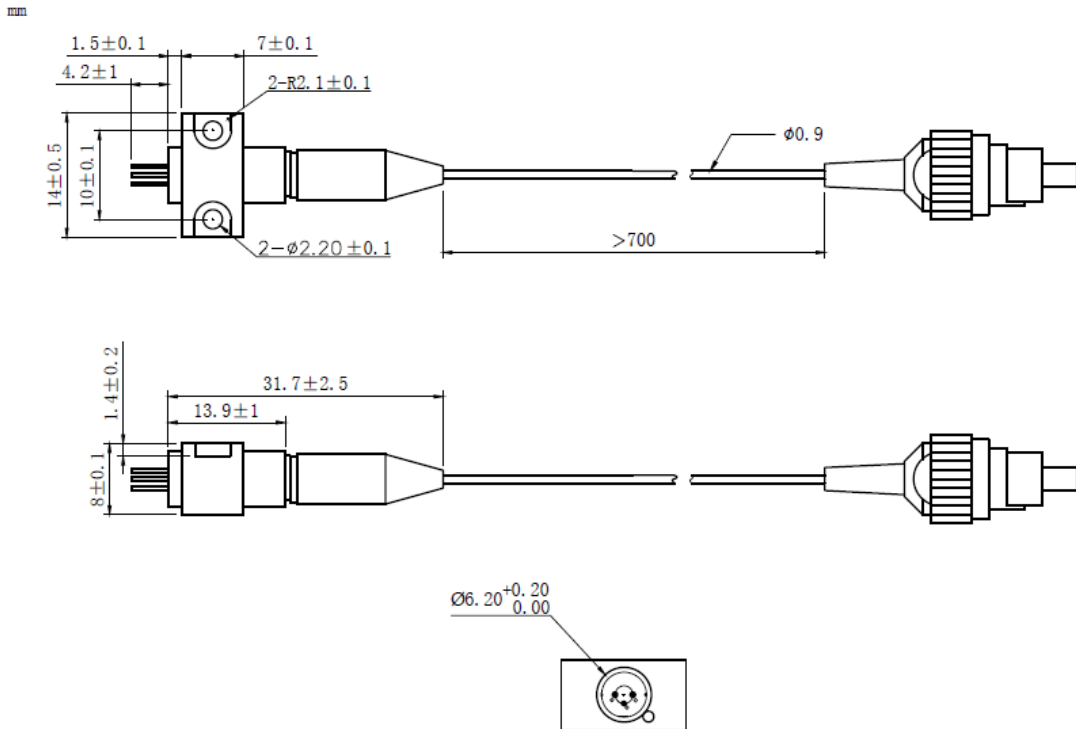
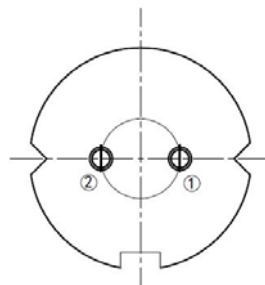
WSLP-635-100m-9-B-R

Wavespectrum Laser Group

www.wavespectrum-laser.com

635nm Pigtailed Diode Laser		100mW/9um Fiber		en.wavespectrum-laser.com.cn	
PARAMETER	SYMBOL	VALUE		UNIT	
Reverse Voltage	V_r	2.0		V	
Operating Temperature	T_{op}	-10~+60		°C	
Storage Temperature	T_{stg}	-40~+85		°C	
Lead soldering temperature (10 sec.)	T_{is}	260		°C	
Features: <ul style="list-style-type: none"> 🔸 635nm 🔸 With 9um Fiber 🔸 With Reflection Coating 🔸 B82 Package 					
Applications: <ul style="list-style-type: none"> 🔸 Medical Laser Treatment 🔸 Other 					
Specifications	WSLP-635-100m-9-B-R				
	Min	Type	Max		
Center Wavelength@25°C	630nm	638nm	645nm		
Spectral Width (FWHM)	----	2.0nm	----		
Output Power	----	100mW	----		
Fiber Type	SMF-28				
Fiber Core	9um				
Recommend Operating Temperature	25°C				
Fiber Connector	FC/SC/SMA905				
Fiber Length	----	80cm	100cm		
Threshold Current	----	70mA	95mA		
Operating Current	----	230mA	250mA		
Operating Voltage	----	2.8V	3.5V		
Package Style	B82				
Reflection ratio (1000nm~1100nm)	>99.9%				



B82 Package View:

PIN Bottom View:


1	LD(+)
2	LD(-)

Electrically shorten LD module and store in non-extreme conditions.
 Suggest using the constant current power supply.



Wavespectrum Laser Group
www.wavespectrum-laser.com
sales@wavespectrum-laser.com

